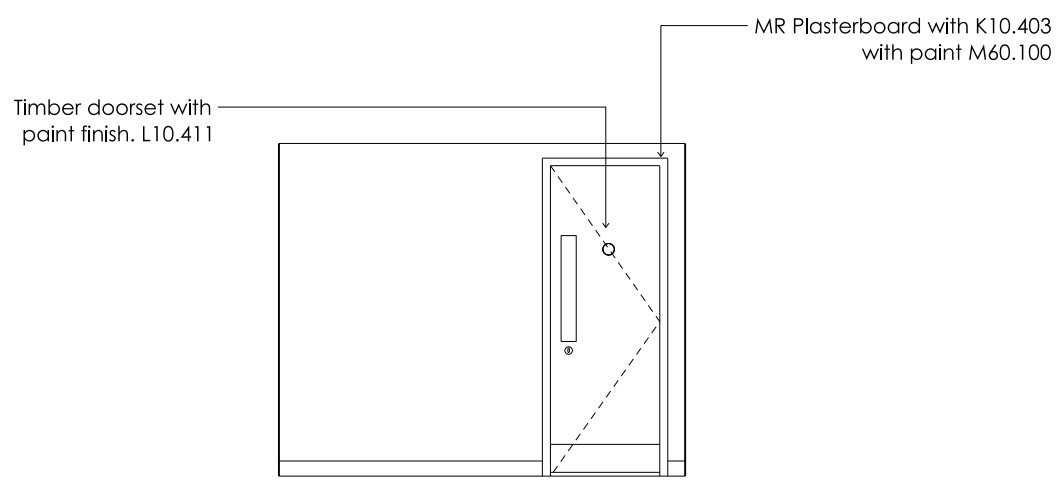
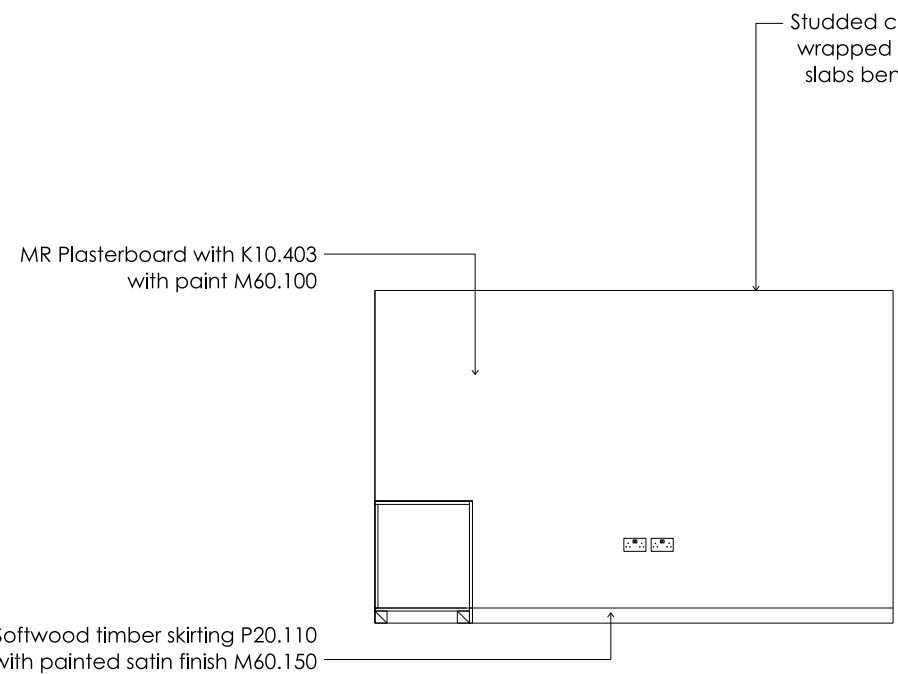
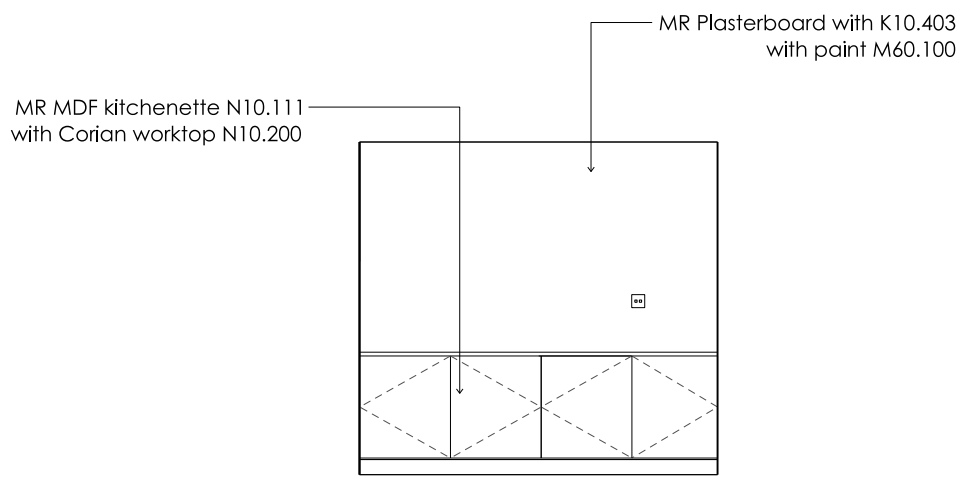
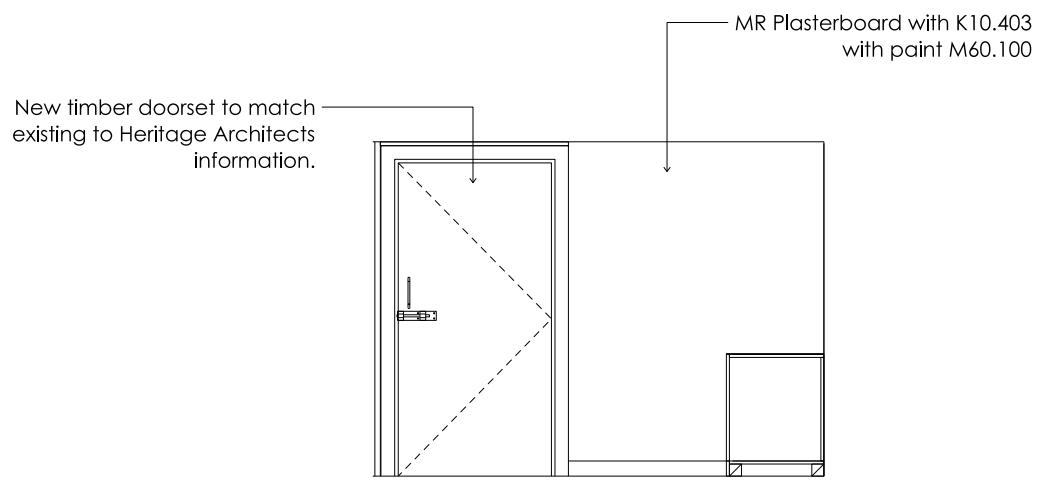


1
3115 Arch 6: Space A
Plan

2
3115 Arch 6: Space A
RCP

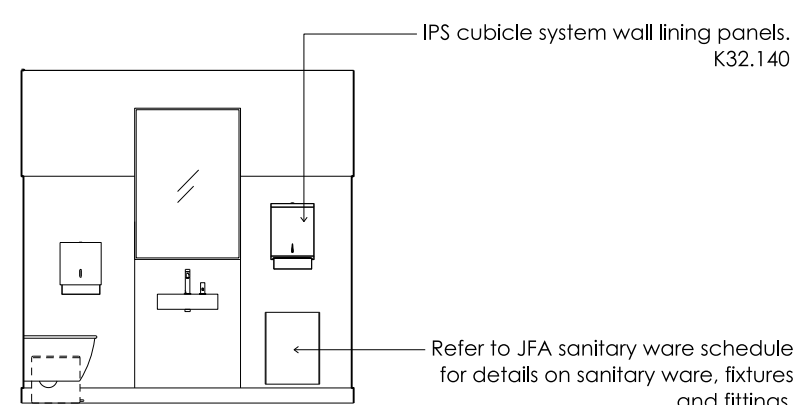
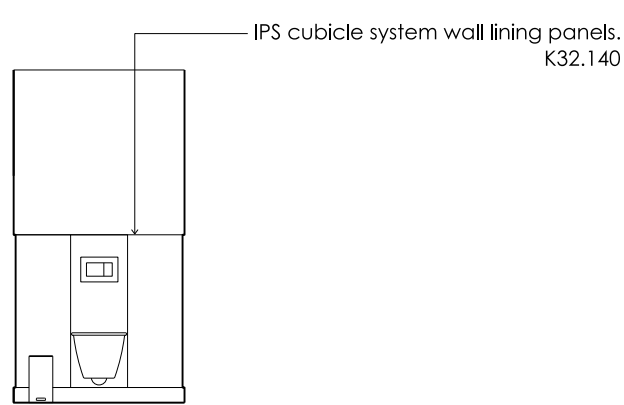
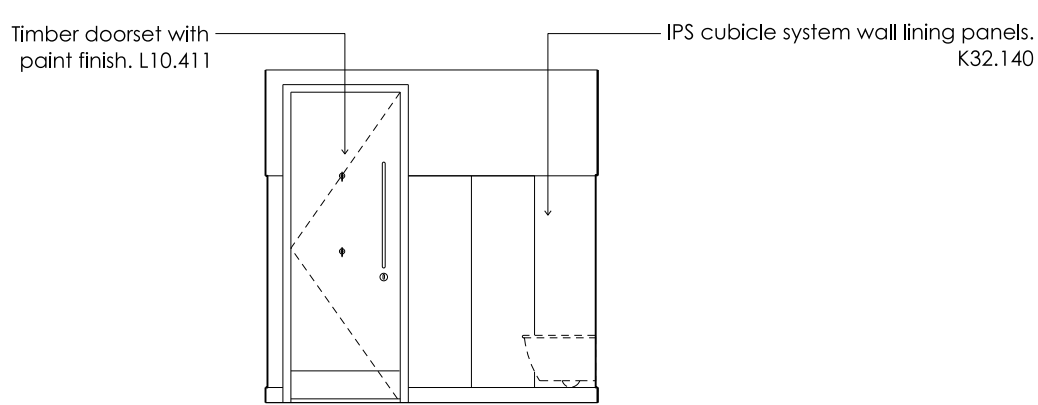
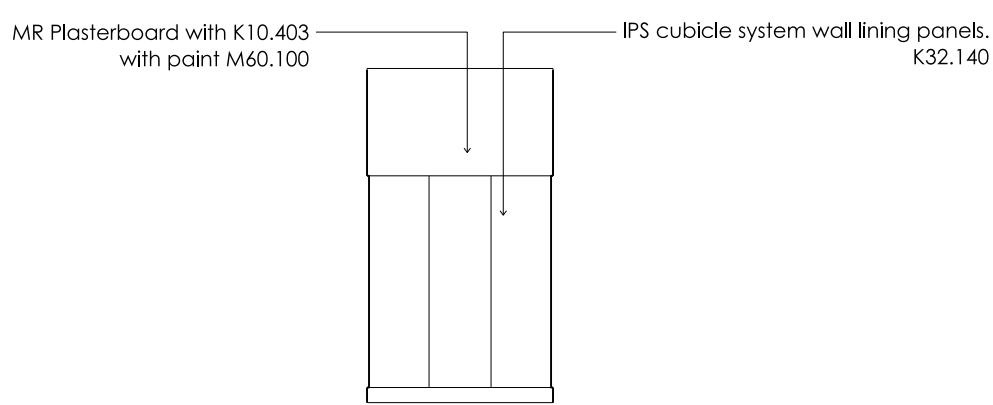


3
3115 Arch 6: Space B
Elevation

4
3115 Arch 6: Space B
Elevation

5
3115 Arch 6: Space B
Elevation

6
3115 Arch 6: Space B
Elevation



7
3115 Arch 6: Space B
Elevation

8
3115 Arch 6: Space B
Elevation

9
3115 Arch 6: Space B
Elevation

10
3115 Arch 6: Space B
Elevation

Key

Ceiling Finishes

- Arched plasterboard MR suspended ceiling.
- Acoustic plaster + paint finish, K10
- Suspended MR plasterboard ceiling with paint finish, K10
- Suspended plasterboard ceiling with acoustic plaster lining, K10
- Existing masonry cleaned and repointed.
- To Heritage Architect's Specification.
- MR (Moisture resistant) suspended ceiling, K10
- Metal lining, K13
- Plasterboard Lining, Paint finish, K10

Floor Finishes

- Linoleum, M50
- Timber (engineered boards), K20
- Carpet, M50
- Quarry Tiles, M40
- Concrete Screed, M10
- Entrance Matting, N10
- Metal lining, K13
- Fairfaced Concrete, M10

Services

- Recessed slot grille.
- Recessed extract fan.

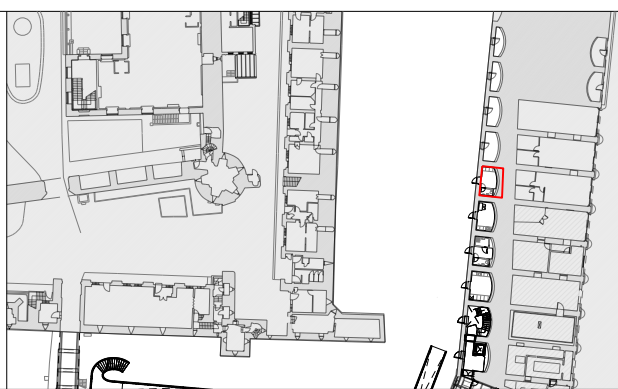
Lighting

- Suspended track with track mounted spotlights.
- Recessed track with track mounted spotlights.
- Surface mounted track with track mounted spotlights.
- Concealed linear LED.
- Surface mounted downlight.
- Recessed downlight.
- Wall Light.
- Presence detector.
- Recessed uplight.
- Emergency exit signage.
- Emergency lighting.

Small Power

- Switched Fused Connection Unit.
- Wifi Connection Points.
- Light Switch.
- Unswitched Socket Outlet.
- Double Switch Socket Outlet.
- Grid Switch.
- Motion Detector.
- Smoke Detector.
- Smoke Detector with C/W Beacon + Sounder.
- Vold Detection.
- Wifi.
- Access Panel.

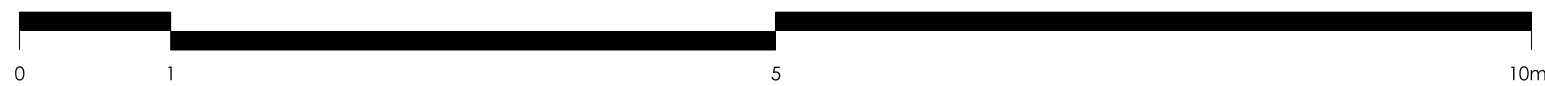
Tender DRAFT



General Notes:

To be read in conjunction with Service Engineer, Structural Engineers and Heritage Architects information.

All demolition and proposed works are to be undertaken in adherence to SMC conditions and Listed Building Consent conditions.



Jamie Fobert — Architects

Rochelle, 22 Club Row
London E2 7EY
T: +44 (0) 207 553 6560
mail@jamiefobertarchitects.com

Copyright of Jamie Fobert Architects Ltd 2023

Unless indicated below, this drawing is for information only.
Do not scale. Use figured dimensions only. All dimensions to be checked on site.

Issue/Revision	Date	Rev
Stage 4	18 07 25	A
Tender Draft	24 10 25	B

Project	The Tower of London
Subject	Moat Arch 6: Moat Staff Volunteer Space B
Scale	1:50
Original Size	A1
Date	17 04 25
Drawing No.	TOL-JFA-01-ZZ-DW-A-3115